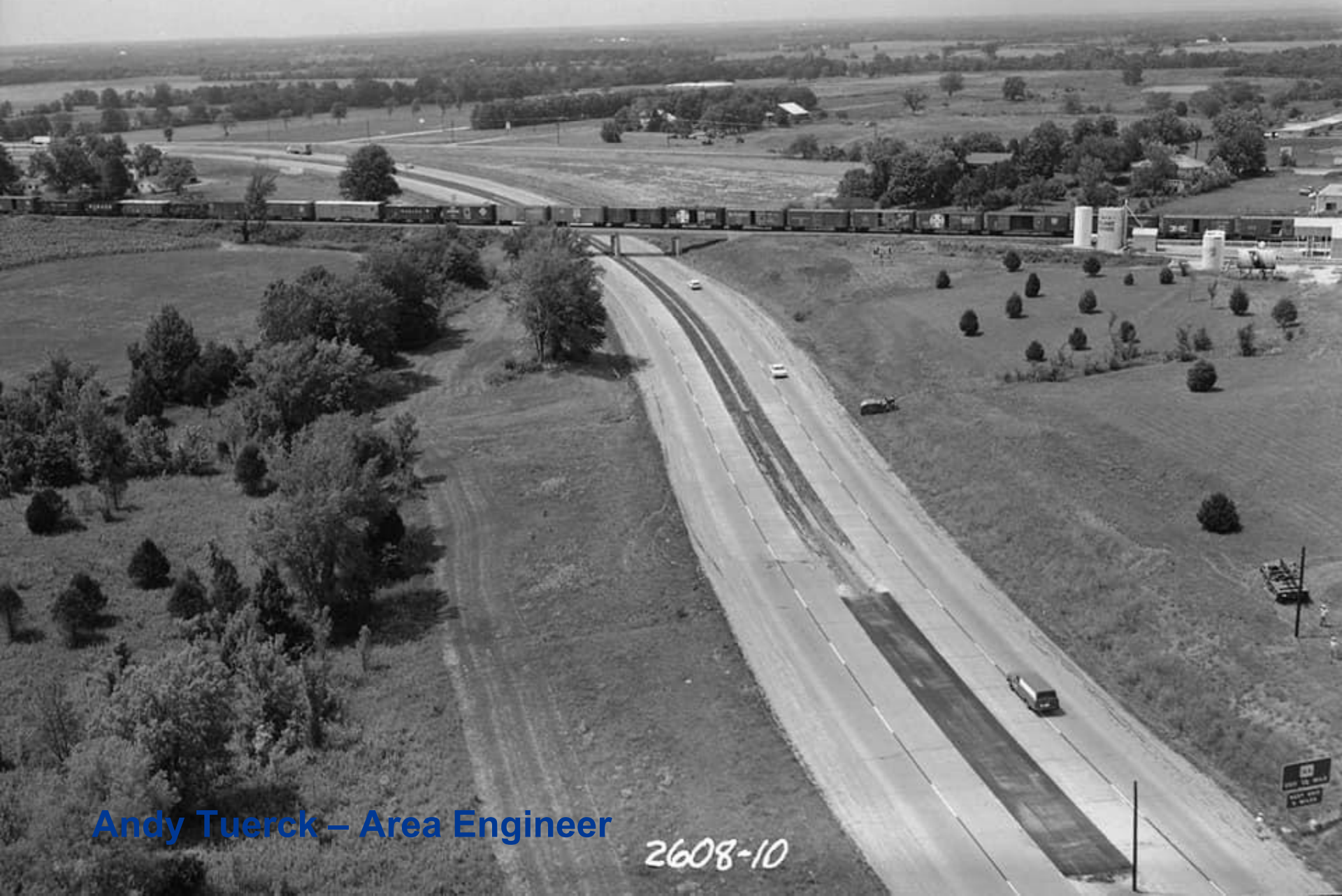


# MoDOT Project Updates – Summer 2024

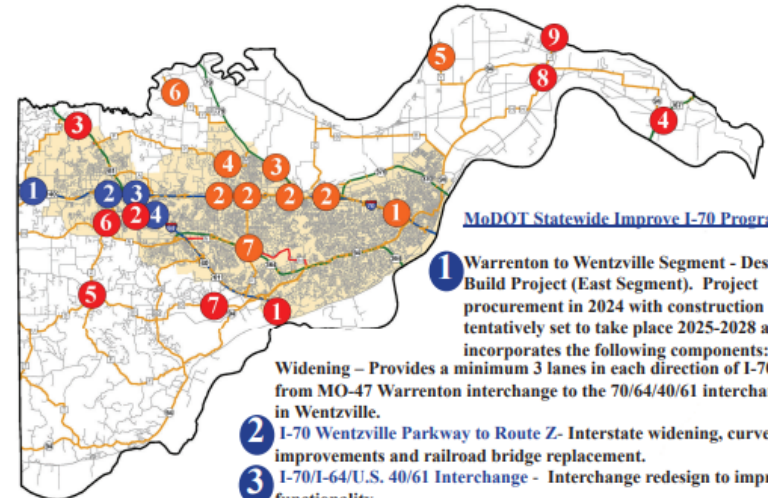


Andy Tuerck – Area Engineer

2608-10



## MoDOT 2024-2025 St. Charles County Construction Projects



### MoDOT Statewide Improve I-70 Program

- 1 Warrenton to Wentzville Segment - Design-Build Project (East Segment). Project procurement in 2024 with construction tentatively set to take place 2025-2028 and incorporates the following components:  
 Widening - Provides a minimum 3 lanes in each direction of I-70 from MO-47 Warrenton interchange to the 70/64/40/61 interchange in Wentzville.
- 2 I-70 Wentzville Parkway to Route Z- Interstate widening, curve improvements and railroad bridge replacement.
- 3 I-70/I-64/U.S. 40/61 Interchange - Interchange redesign to improve functionality.
- 4 I-64 Widening - Capacity improvements with an additional I-64 lane between Route K and the I-70/I-64/U.S. 40/61 Interchange.
- 1 <sup>2024</sup> I-70 from Fairgrounds to Cave Springs- Interchange improvements. Work began Summer 2022 and ends Summer 2024.
- 2 I-70 Bridge rehabilitation project- Rehabilitation of 12 bridges along the I-70 corridor. Construction began Fall 2023 and is expected to be completed Fall 2024.
- 3 Route 79 Improvements- Conversion of Route 79 and T.R. Hughes Boulevard into a Green "T" intersection. Construction began Spring 2023 and is expected to be completed Summer 2024.
- 4 Route M - Pavement resurfacing from Route P to Route 79. Work is scheduled to be completed Fall 2024.
- 5 Route V- Rebuild pavement and resurfacing from Route 94 to Canvas Back Road. Work scheduled to be completed by Fall 2024.
- 6 Route Y- Pavement resurfacing from Flatwoods Road to Route 79. Work is scheduled to be completed by Fall 2024.

2024 – 2025 MoDOT Projects  
St. Charles Area Team

# IMPROVE I-70



AUGUST 2024

Totals listed are STIP funds unless otherwise noted

## Planned Capacity Improvements Blue Springs to Wentzville

Under Construction - \$691 million

Funded Future Improvements - \$2.5 - 2.8 billion

## Truck Parking Multiple Locations Statewide

Beginning in the fall of 2025, a corridor-wide project will evaluate and improve truck parking at multiple locations along I-70 statewide.  
\$30 million



- Environmental near completion
- **1.1 million jobs** depend on I-70
- Workforce development opportunities
- I-70 carries **100 million tons of freight**

### PLANNED CAPACITY IMPROVEMENTS:

STIP funded: \$422.8 million  
General Revenue funded: \$2.84 billion

[modot.org/improveI70](https://modot.org/improveI70)

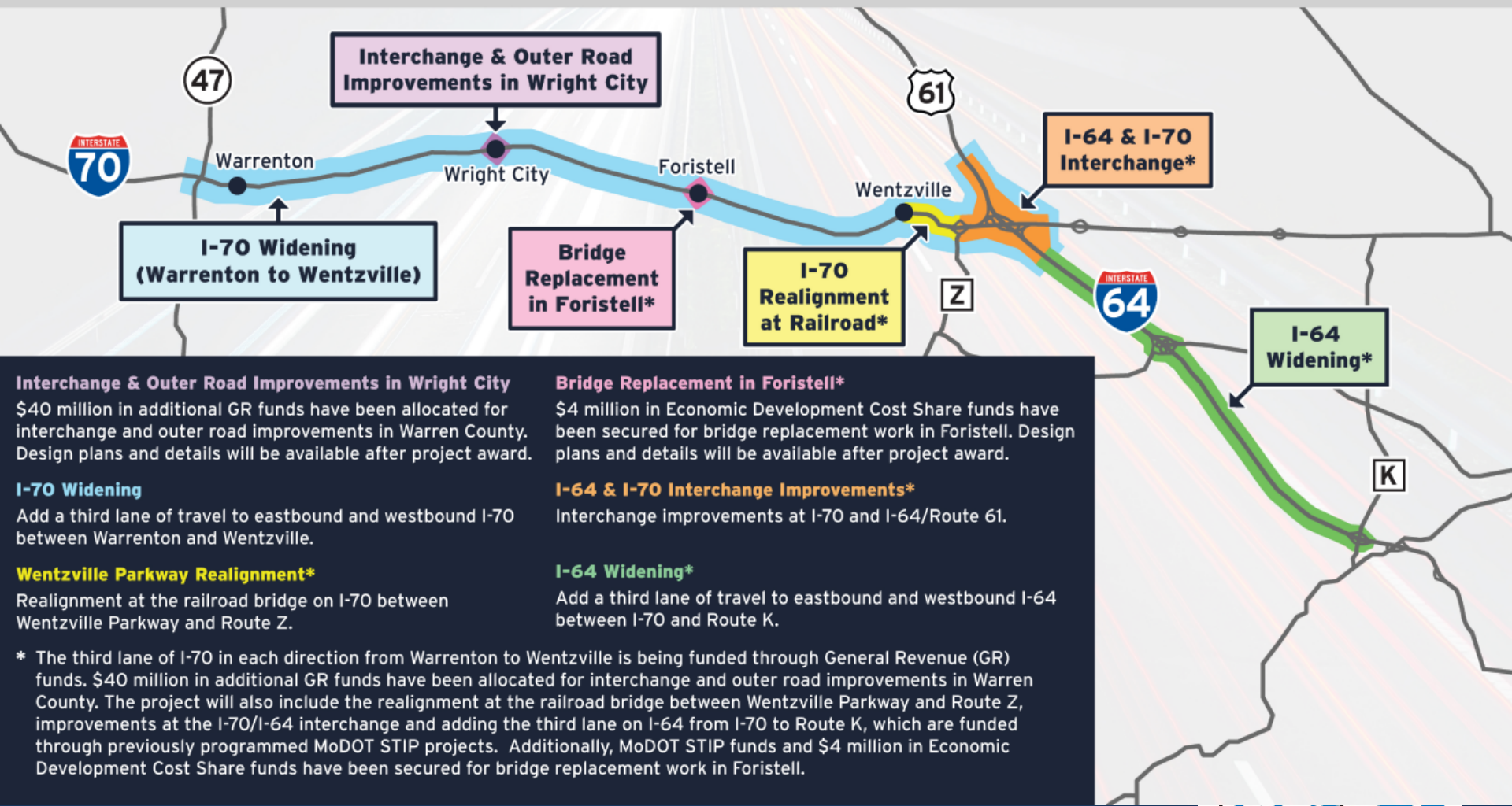


# IMPROVE I-70



## PROJECT 2 OVERVIEW: WARRENTON TO WENTZVILLE

Project 2 Details:  
[modot.org/improveI70/warrentonwentzville](http://modot.org/improveI70/warrentonwentzville)



**Interchange & Outer Road Improvements in Wright City**  
\$40 million in additional GR funds have been allocated for interchange and outer road improvements in Warren County. Design plans and details will be available after project award.

**I-70 Widening**  
Add a third lane of travel to eastbound and westbound I-70 between Warrenton and Wentzville.

**Wentzville Parkway Realignment\***  
Realignment at the railroad bridge on I-70 between Wentzville Parkway and Route Z.

**Bridge Replacement in Foristell\***  
\$4 million in Economic Development Cost Share funds have been secured for bridge replacement work in Foristell. Design plans and details will be available after project award.

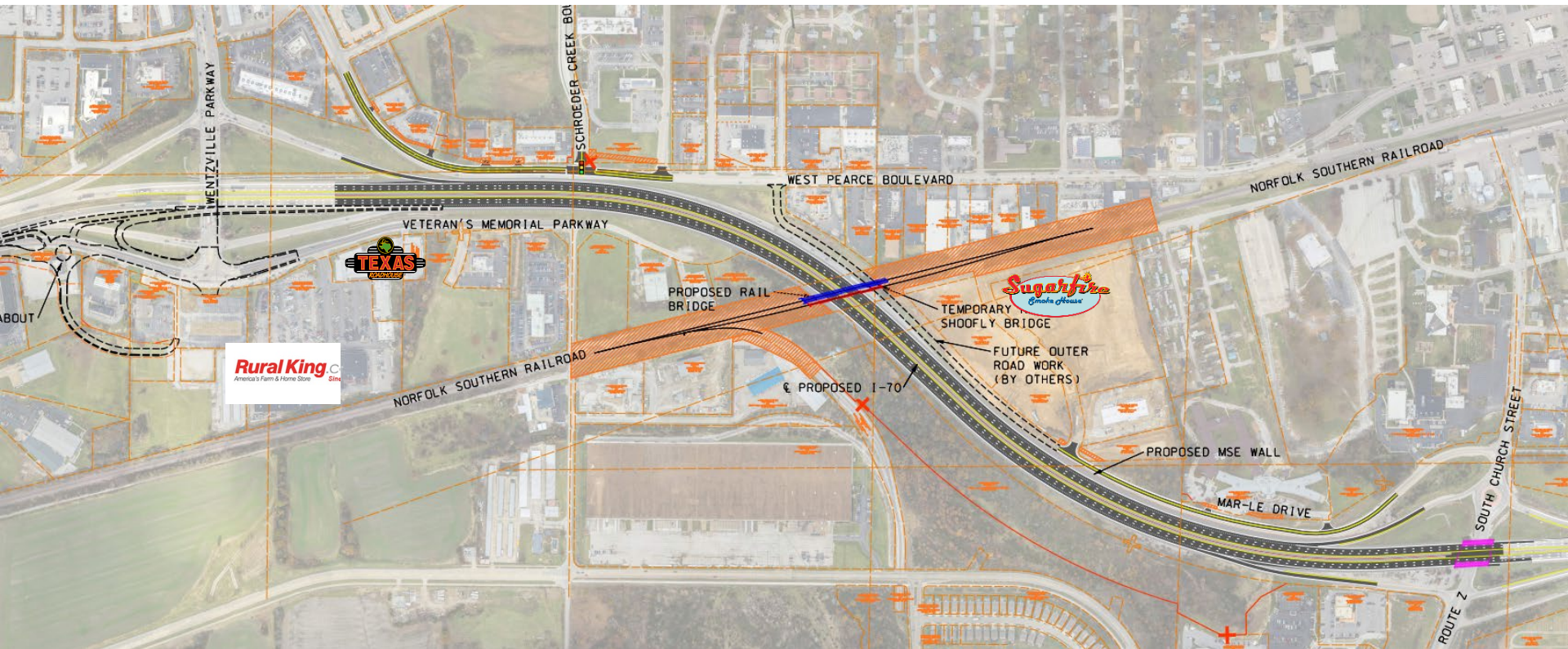
**I-64 & I-70 Interchange Improvements\***  
Interchange improvements at I-70 and I-64/Route 61.

**I-64 Widening\***  
Add a third lane of travel to eastbound and westbound I-64 between I-70 and Route K.

\* The third lane of I-70 in each direction from Warrenton to Wentzville is being funded through General Revenue (GR) funds. \$40 million in additional GR funds have been allocated for interchange and outer road improvements in Warren County. The project will also include the realignment at the railroad bridge between Wentzville Parkway and Route Z, improvements at the I-70/I-64 interchange and adding the third lane on I-64 from I-70 to Route K, which are funded through previously programmed MoDOT STIP projects. Additionally, MoDOT STIP funds and \$4 million in Economic Development Cost Share funds have been secured for bridge replacement work in Foristell.

# I-70 bottleneck between Wentzville Pkwy and Highway Z

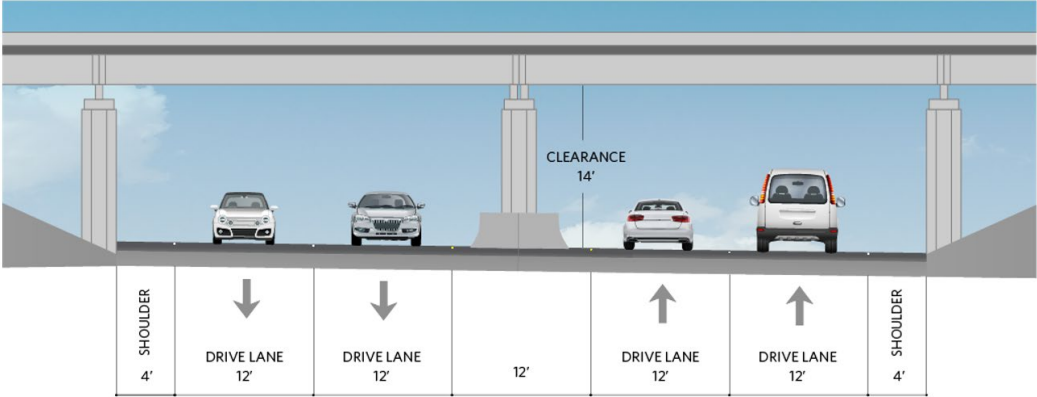
- **Conceptual Study 2018-2019 \*Completed\***
- **\*Funded\* Summer 2021 for FY2024**
- **Fall – 2023** Now included with **Improve I-70 Design-Build Project #2 (Eastern Phase)**



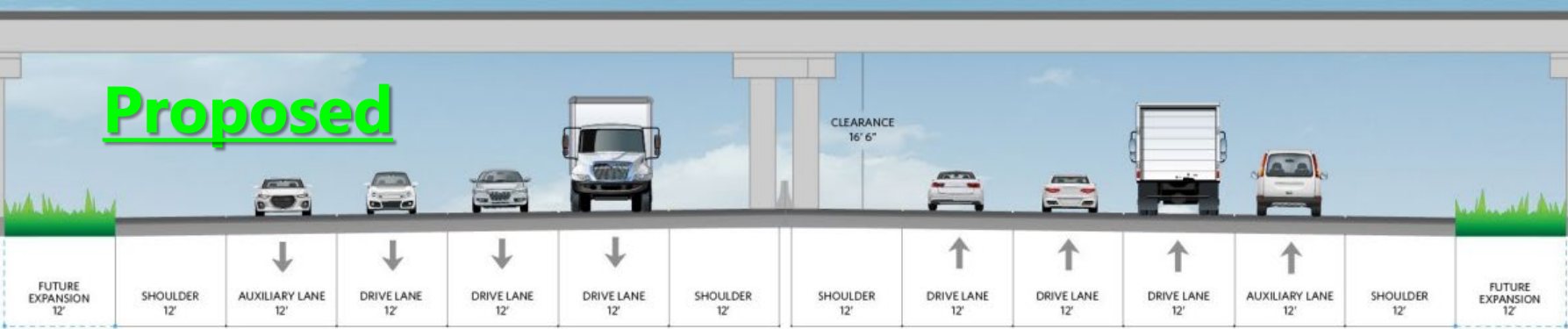
# I-70 bottleneck between Wentzville Pkwy and Highway Z

- Additional lane + Auxiliary lane
- Keep 2 lanes of traffic open
- Room for future I-70 expansion

## Existing

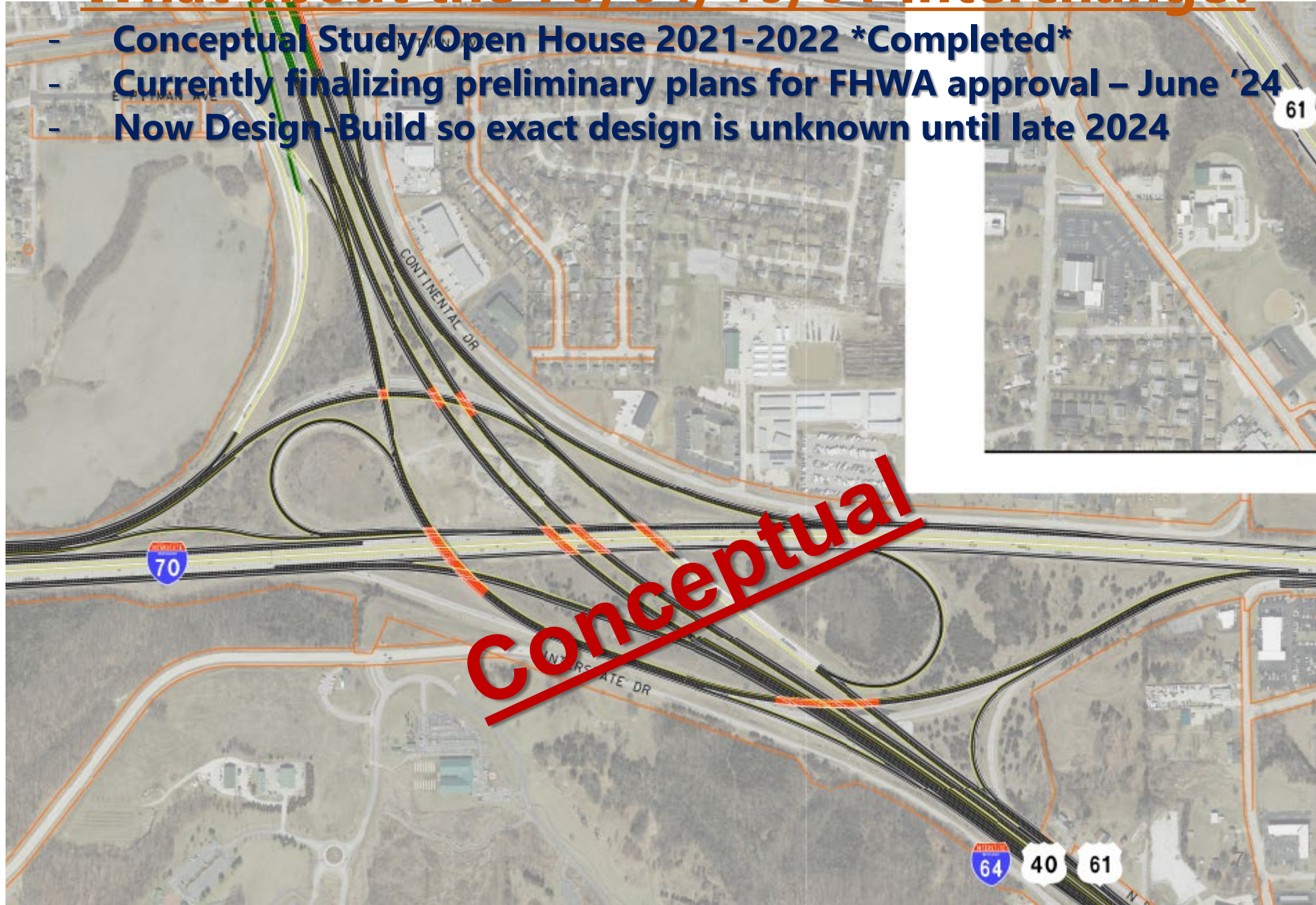


## Proposed

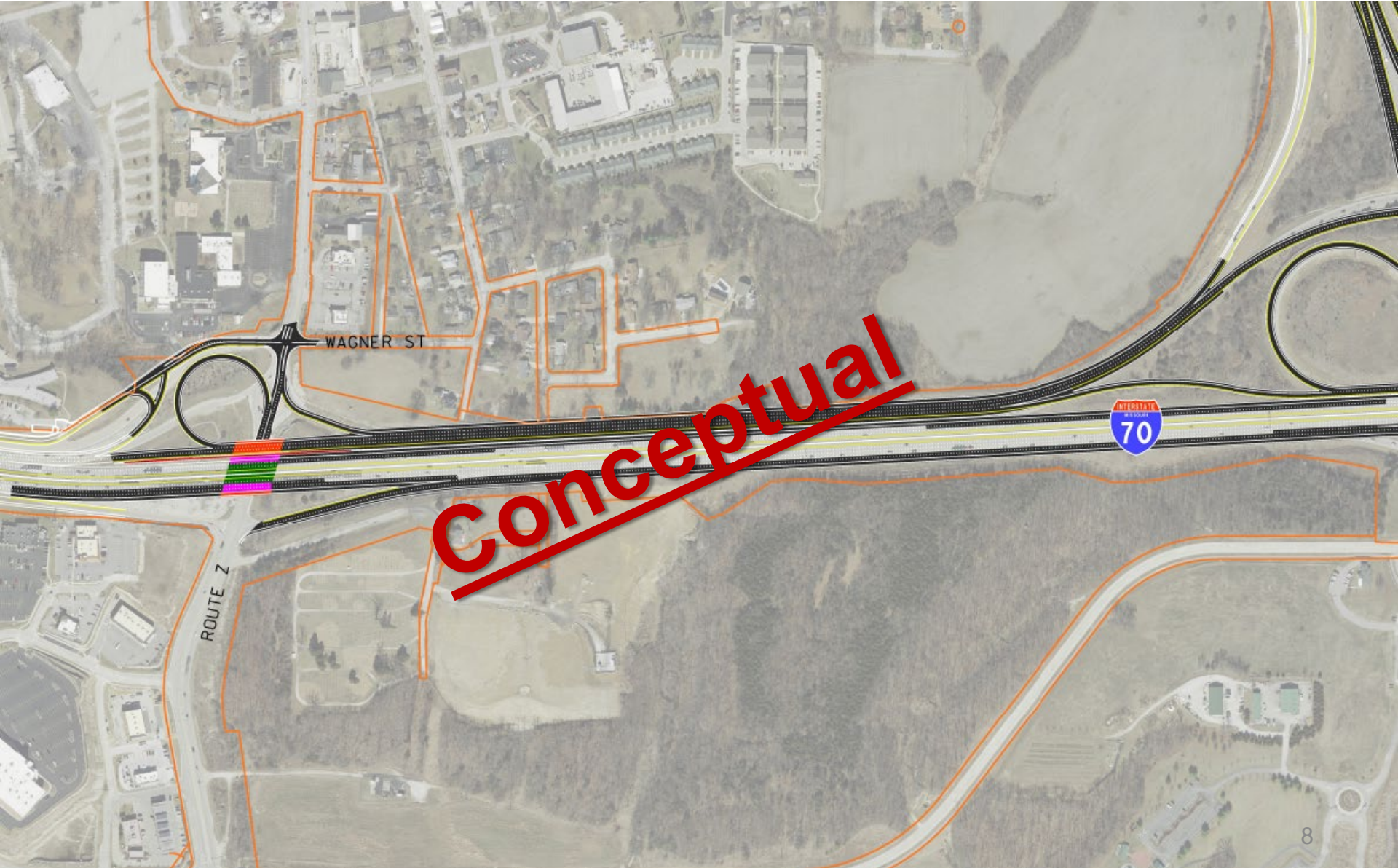


# What about the 70/64/40/61 Interchange?

- Conceptual Study/Open House 2021-2022 \*Completed\*
- Currently finalizing preliminary plans for FHWA approval – June '24
- Now Design-Build so exact design is unknown until late 2024



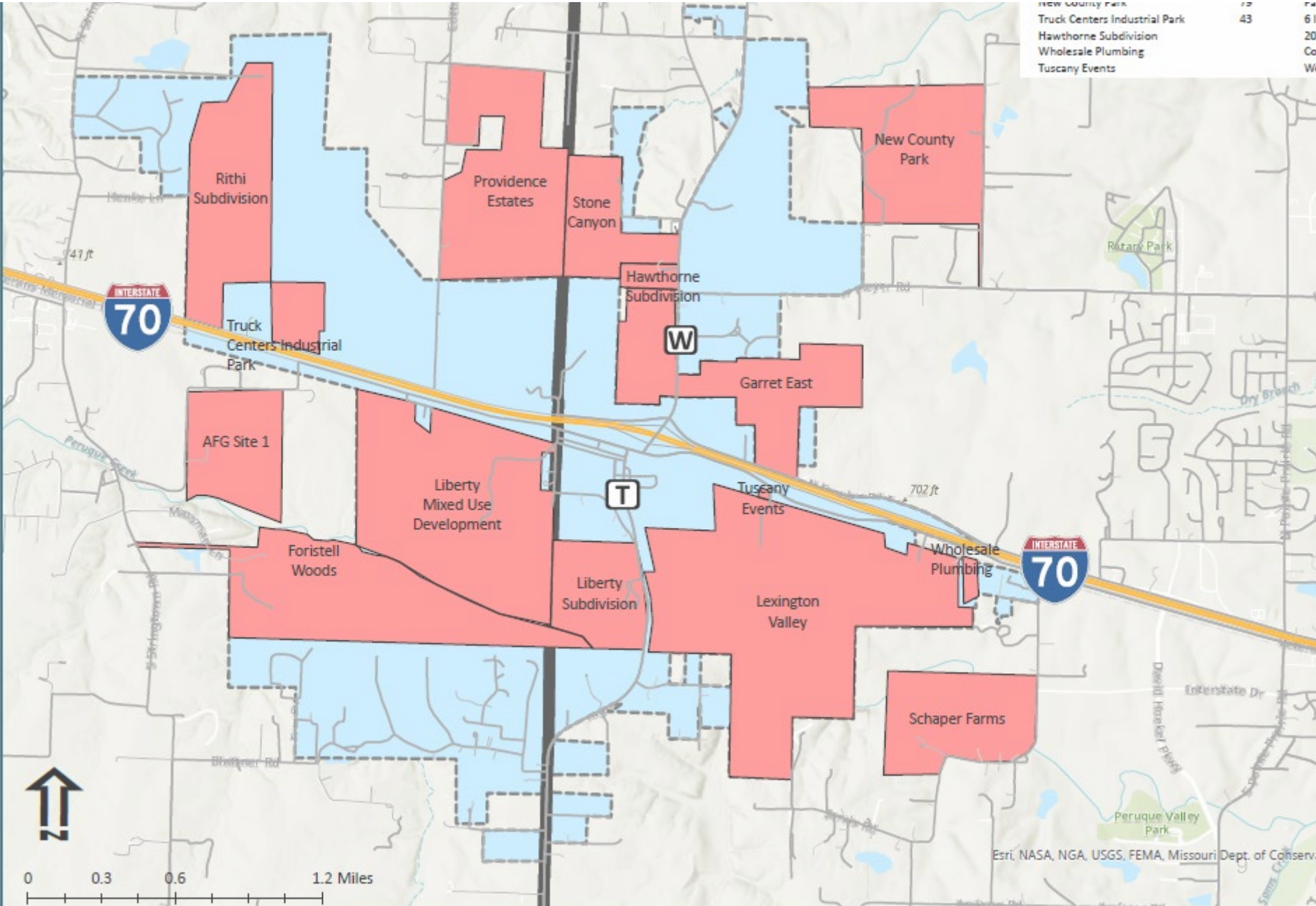
# 70/64/40/61 Interchange Preferred Conceptual Alternative



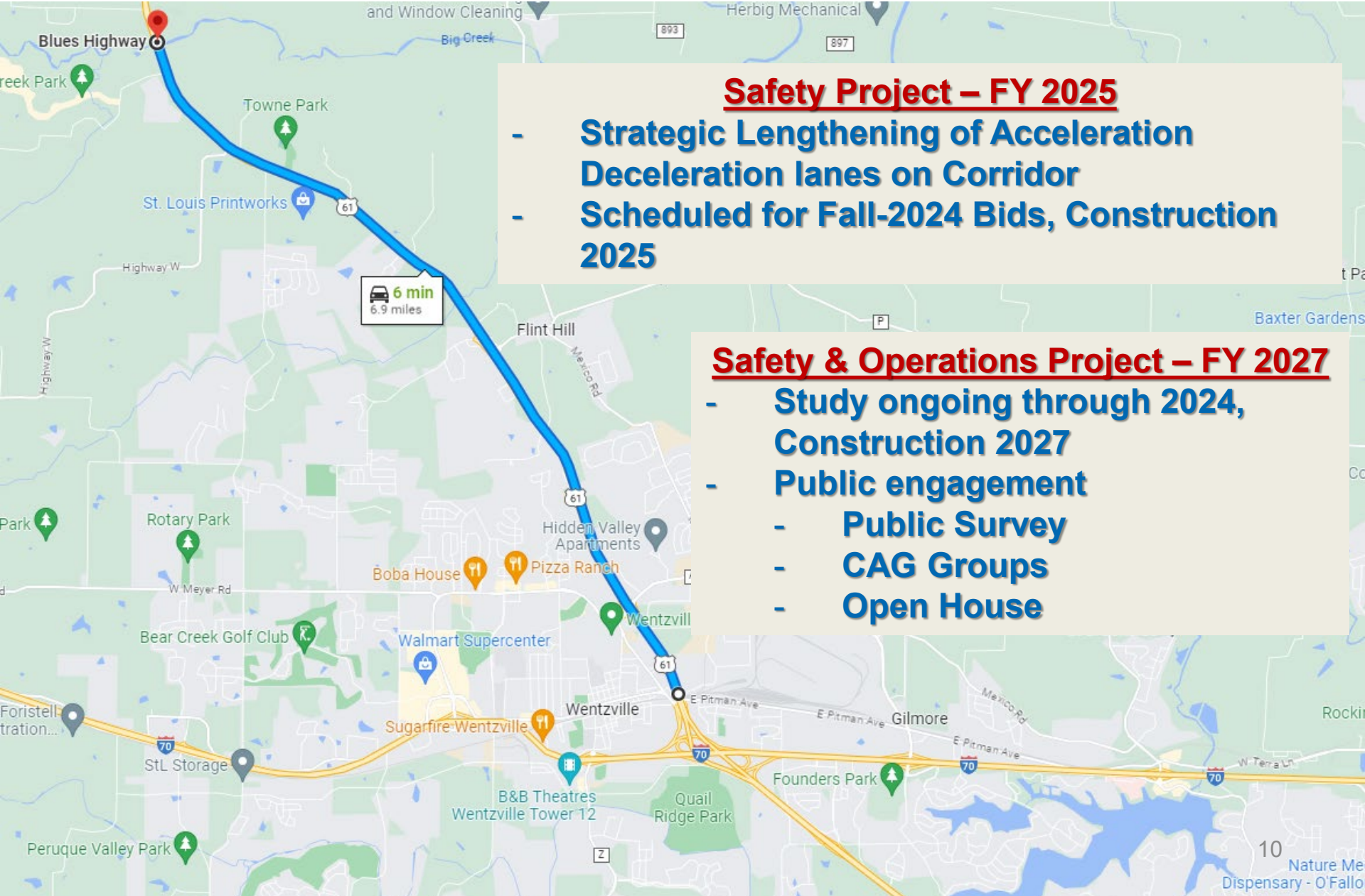


# Future of Foristell around I-70?

New County Park	42	64
Truck Centers Industrial Park	43	61
Hawthorne Subdivision		20
Wholesale Plumbing		Co
Tuscany Events		We



# Upcoming US-61 Corridor Improvements



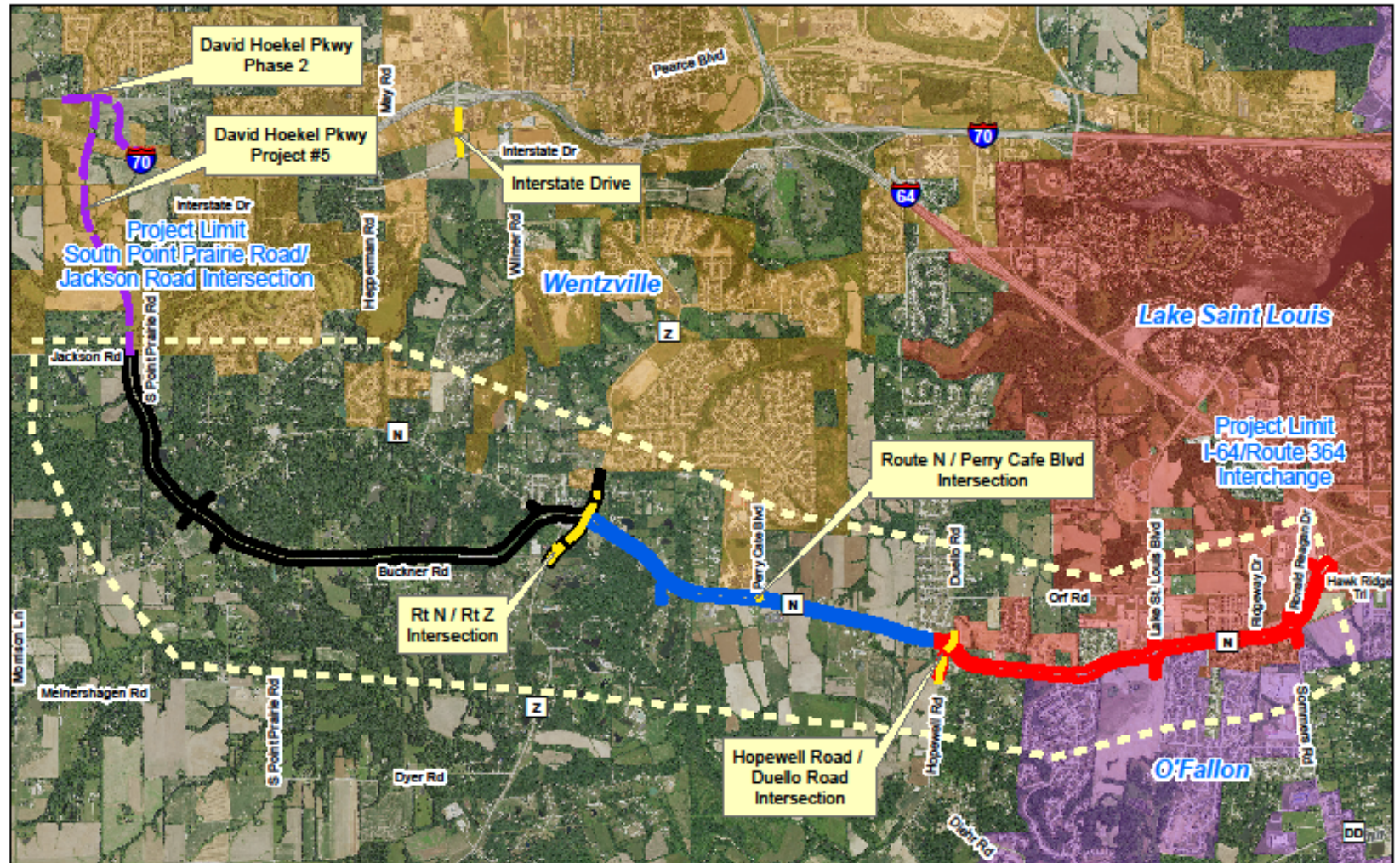
## Safety Project – FY 2025

- Strategic Lengthening of Acceleration Deceleration lanes on Corridor
- Scheduled for Fall-2024 Bids, Construction 2025

## Safety & Operations Project – FY 2027

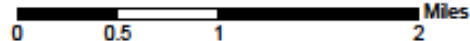
- Study ongoing through 2024, Construction 2027
- Public engagement
  - Public Survey
  - CAG Groups
  - Open House

# Route N Study

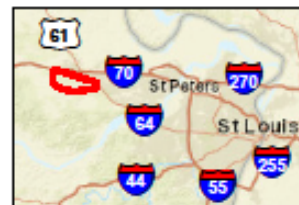


## Legend

- Future David Hoekel Parkway
- Future St. Charles County Projects
- PEL Section West
- PEL Section Center
- PEL Section East
- Study Area



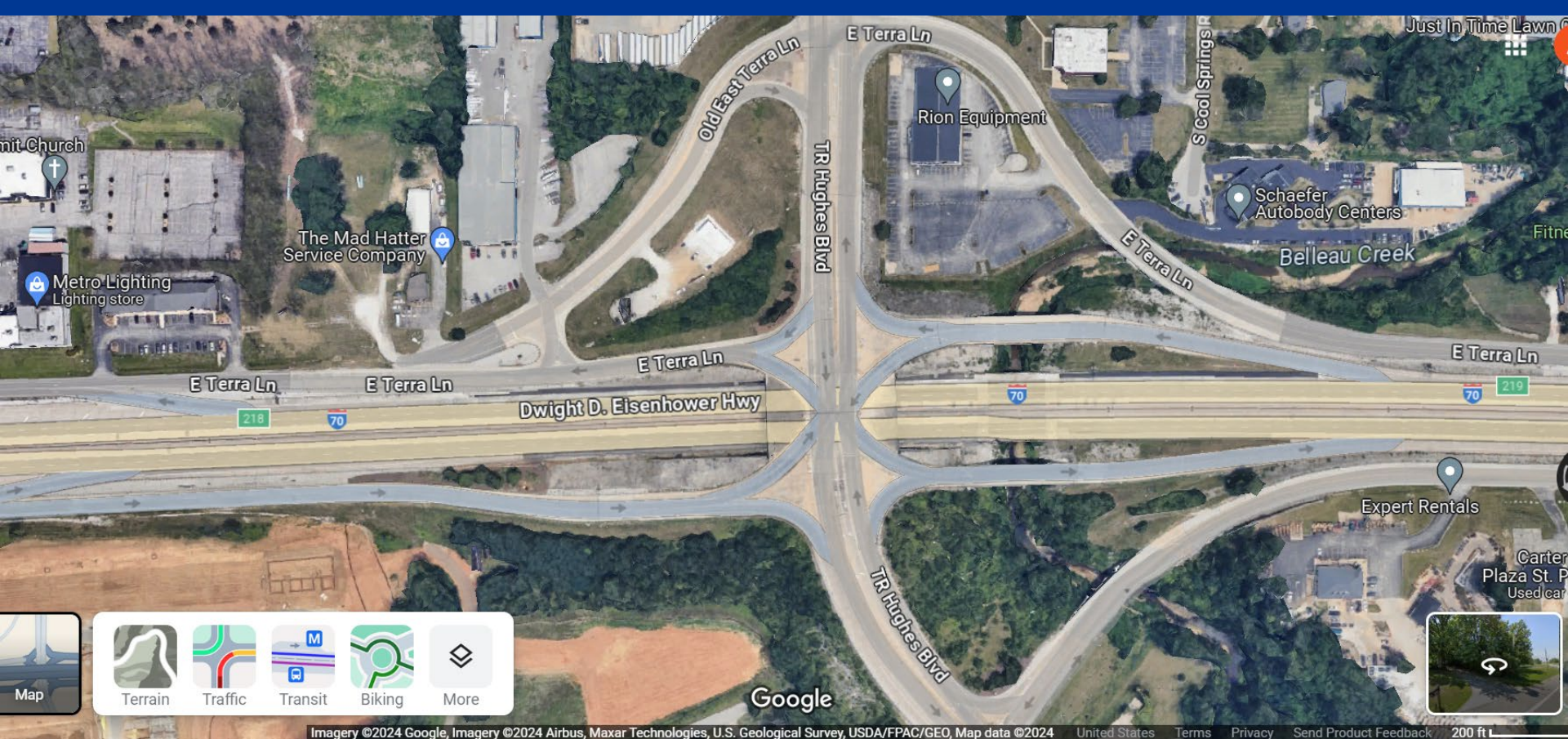
**Figure 1**  
Project Study Area  
Route N EA/PEL





# Medium/High Impact Workzone

## #2) I-70 Bridges over Belleau Creek



- Deck & Approach Slab replacement
- Narrowed lanes, split traffic, barrier walls
- Will lose Aux lane on WB70 to maintain 3 lanes



# Medium Impact Workzone

## #2) I-70 Bridges over Spencer Creek

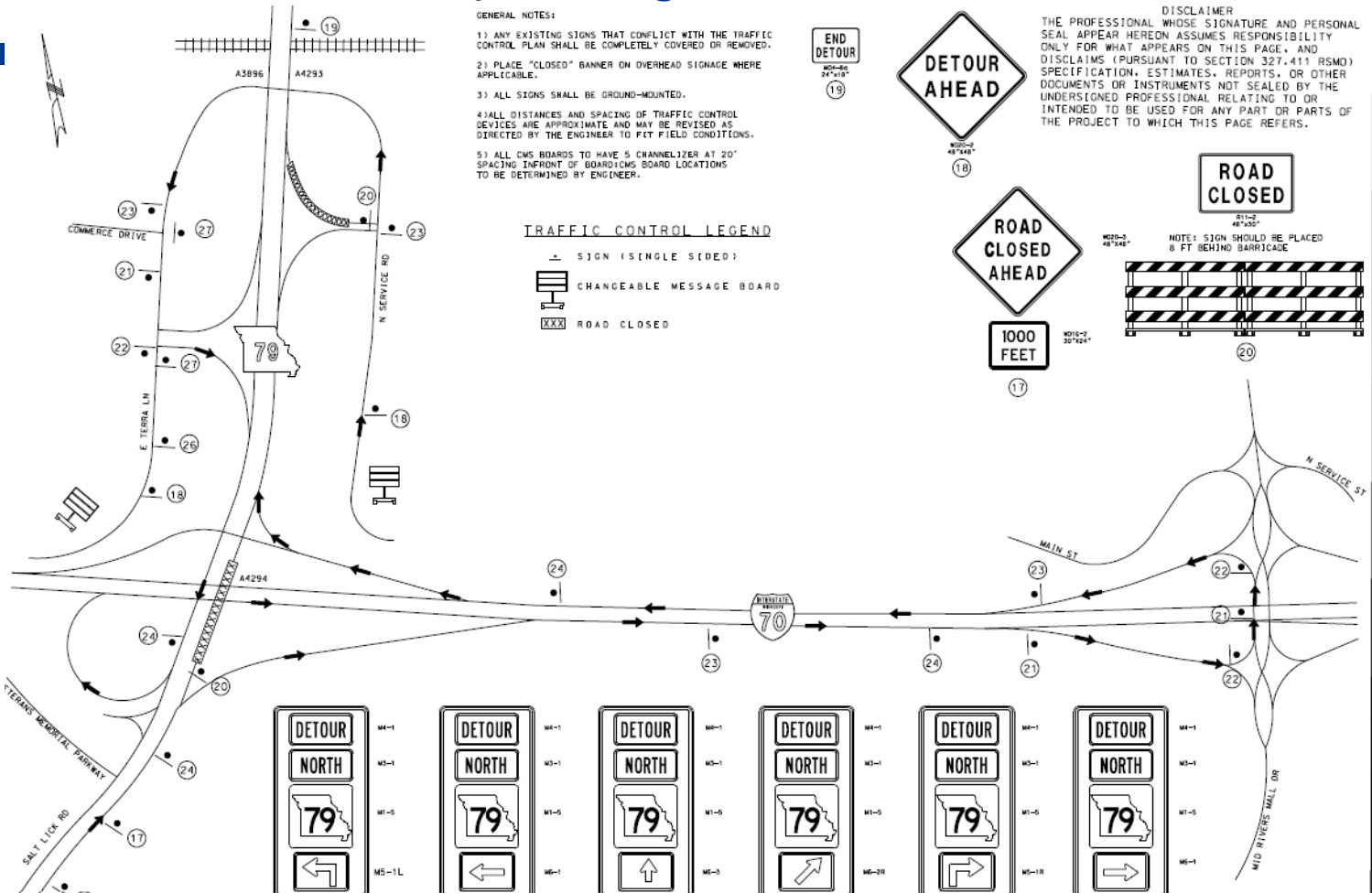


- Deck Repairs, wearing surface, new approaches
- Narrowed lanes, split traffic, barrier walls
- Maintain at least 4 lanes



# Medium Impact Workzone

## #2) 79 Bridge over I-70

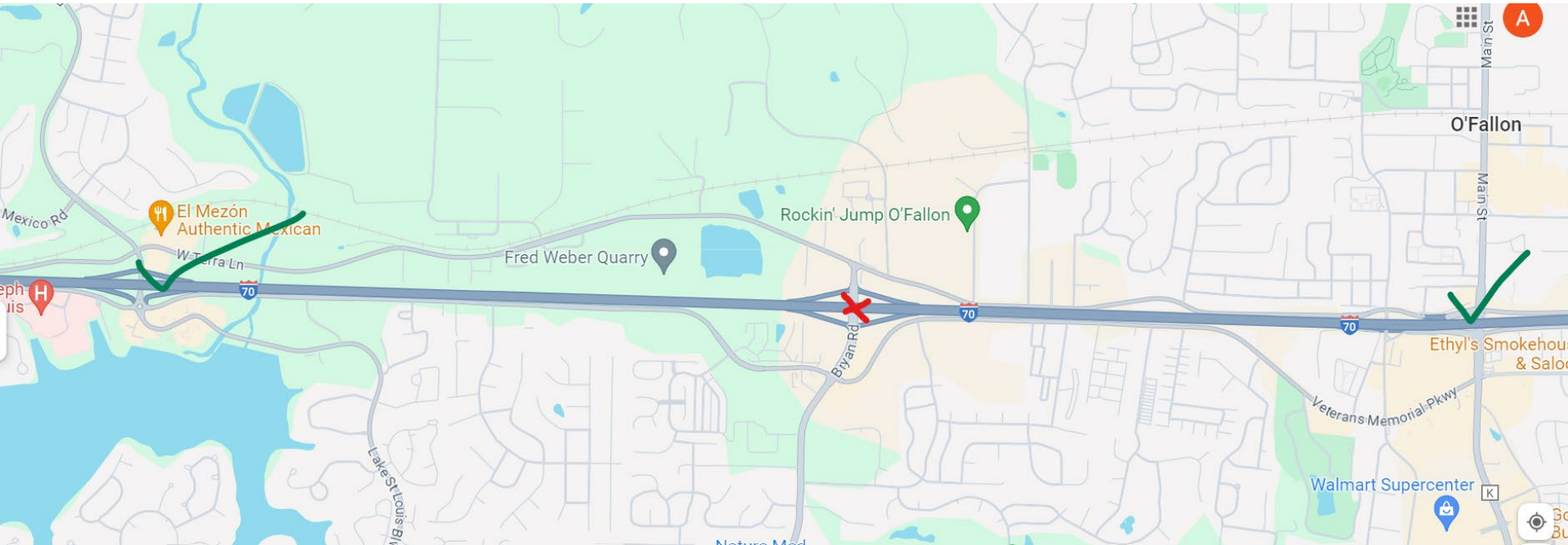


- Deck Repairs, wearing surface, new approaches, bridge painting
- 3 stages with a closure of NB79 (detour) to Mid Rivers
- Weekend I-70 single lane closure for painting



# High Impact Workzone

## #2) Bryan ROAD over I-70 10 Week Bridge Closure



- Deck Repairs, wearing surface, approach slabs, repaint girders
- All ramps open. Weekend I-70 single lane closure for painting
- Traffic detoured to adjacent I-70 interchanges @ LSL & Hwy K
- Open by August 15<sup>th</sup> with **incentive option underway by contractor**





# High Impact Workzone

## #2) Bryan ROAD over I-70 10 Week Bridge Closure





# New SPUI interchange – Zumbuhl @ I-70



# New SPUI interchange – Cave Springs @ I-70



# For more information

MoDOT St. Charles Area Engineer

Andy Tuerck, (314) 453-5046

[Andrew.Tuerck@MoDOT.mo.gov](mailto:Andrew.Tuerck@MoDOT.mo.gov)

